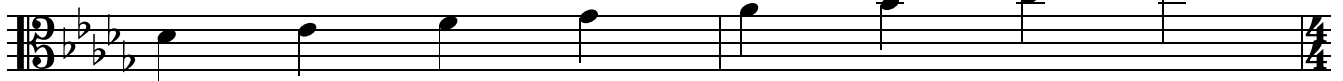


# Db SIGHT-READING + RHYTHM EXERCISES

## Level 1

Alto Clef Instruments - Upper Octave - "Db" Scale



All of the following exercises utilize notes from the key of "Db"

The dotted quarter note is worth 1 1/2 beats.

The first number is written below the note and the next number above the note.

In all of these exercises, the dotted quarter will be followed by a single eighth note.

This is worth 1/2 a beat and should be labeled with a "+" sign below the note.

The dotted quarter rest is equivalent in value to a dotted half note. (1.5 beats)

When writing in the counts, you would write the 2 numbers for the rest ABOVE the rest.

There are no dotted quarter rests on this sheet.

3 **A** 2 4 2 4

1 + 3 1 + 3

Detailed description: This exercise is on a single staff in Alto clef, key of Db, 4/4 time. It starts with a boxed letter 'A'. The notes are: D5 (finger 2), E5 (finger 4), F5 (finger 2), G5 (finger 4), A5 (finger 2), B5 (finger 4), C6 (finger 2), D6 (finger 4). The first two notes have a dotted quarter note followed by an eighth note. The next two notes have a dotted quarter note followed by an eighth note. The last two notes have a dotted quarter note followed by an eighth note. Below the staff, the rhythmic markings are: '1 + 3' under the first two notes, and '1 + 3' under the next two notes.

7

Detailed description: This exercise is on a single staff in Alto clef, key of Db, 4/4 time. It starts with a boxed letter 'A'. The notes are: D5 (finger 2), E5 (finger 4), F5 (finger 2), G5 (finger 4), A5 (finger 2), B5 (finger 4), C6 (finger 2), D6 (finger 4). The first two notes have a dotted quarter note followed by an eighth note. The next two notes have a dotted quarter note followed by an eighth note. The last two notes have a dotted quarter note followed by an eighth note.

11 **B**

Detailed description: This exercise is on a single staff in Alto clef, key of Db, 4/4 time. It starts with a boxed letter 'B'. The notes are: D5 (finger 2), E5 (finger 4), F5 (finger 2), G5 (finger 4), A5 (finger 2), B5 (finger 4), C6 (finger 2), D6 (finger 4). The first two notes have a dotted quarter note followed by an eighth note. The next two notes have a dotted quarter note followed by an eighth note. The last two notes have a dotted quarter note followed by an eighth note.

15

Detailed description: This exercise is on a single staff in Alto clef, key of Db, 4/4 time. It starts with a boxed letter 'B'. The notes are: D5 (finger 2), E5 (finger 4), F5 (finger 2), G5 (finger 4), A5 (finger 2), B5 (finger 4), C6 (finger 2), D6 (finger 4). The first two notes have a dotted quarter note followed by an eighth note. The next two notes have a dotted quarter note followed by an eighth note. The last two notes have a dotted quarter note followed by an eighth note.

19

C

23

27

D

31

35

E

39

43

F

47